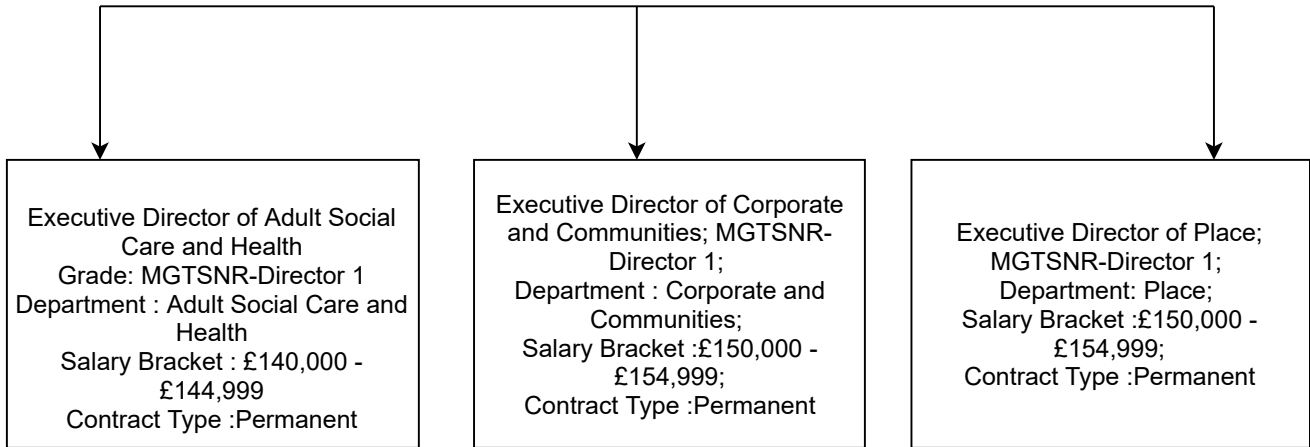
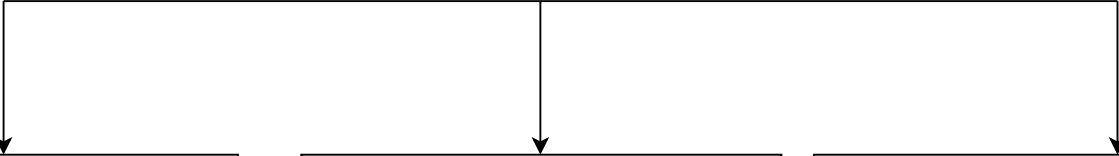


Chief Executive Grade: MGTCHX-Chief Executive Department: Chief
Executive Grouping Salary Bracket: £185,000 - £189,999
Max Salary: £189,282
Contract Type: Permanent
Post Holder: Ian Thomas



Executive Director of Corporate and Communities



Assistant Director Digital and IT;
MGTSNR-Chief Officer 4;
Digital and IT;
£105,000 - £109,999;
Permanent

Assistant Director, Contracts &
Commercial;
MGTSNR-Chief Officer 4;
Contracts & Commercial;
£100,000 - £104,999;
Permanent

Assistant Director, Culture, Communities &
Engagement; MGTSNR-Chief Officer 4;
Culture, Communities & Engagement;
£105,000 - £109,999; Permanent

Assistant Director, HR and OD;
MGTSNR-Chief Officer 4;
Human Resources and Organisational
Development;
£105,000 - £109,999;
Permanent

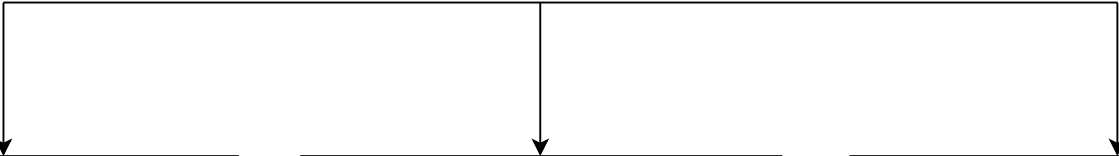
Assistant Director, Transportation,
Highways and Regulatory Services;
MGTSNR-Chief Officer 4;
Transportation, Highways and Regulatory
Services;
£105,000 - £109,999;
Permanent

Future Workplace Programme Director;
MGTSNR-Chief Officer 4;
Corporate Transformation Hub;
£95,000 - £99,999

General Counsel;
MGTSNR-Chief Officer 4;
Governance & Law;
£110,000 - £114,999;
Permanent

South London Waste Partnership Director;
MGTSNR-Chief Officer 4;
Contracts & Commercial;
£100,000 - £104,999;
Permanent

Executive Director of Adult Social Care and Health

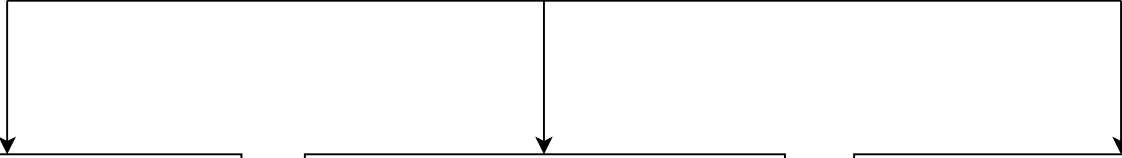


Assistant Director, Commissioning and
Transformation;
MGTSNR-Chief Officer 4;
Commissioning and Transformation;
£95,000 - £99,999;
Permanent

Assistant Director, Healthy & Safe
Communities;
MGTSNR-Chief Officer 4; Healthy & Safe
Communities;
£105,000 - £109,999;
Permanent

Assistant Director, Operations;
MGTSNR-Chief Officer 4;
Operations; £105,000 - £109,999;
Permanent

Executive Director of Place



Assistant Director - Homes;
MGTSNR-Chief Officer 4;
Homes; £95,000 - £99,999;
Permanent

Assistant Director - Strategic Planning and
Infrastructure;
MGTSNR-Chief Officer 4;
Strategic Planning & Infrastructure;
£105,000 - £109,999;
Permanent

Assistant Director of Property,
Development and Investment;
MGTSNR-Chief Officer 4;
Property,
Development and Investment;
£105,000 - £109,999;
Fixed term

Assistant Director of Regeneration and
Economic Recovery;
MGTSNR-Chief Officer 4;
Regeneration and Economic Recovery;
£100,000 - £104,999;
Permanent

Cambridge Road Estate Development
Director;
MGTSNR-Chief Officer 4;
Cambridge Road Estate;
£105,000 - £109,999;
Permanent